

The Personalised Digital Learning Programme (PDLP)



Parent Engagement Session

9 Jan 2025

A PRESENTATION BY
MINISTRY OF EDUCATION, SINGAPORE

OFFICIAL(OPEN)\NON-SENSITIVE



The National Digital Literacy Programme (NDLP) and the PDLP

An Overview

The National Digital Literacy Programme (NDLP)

1. The NDLP was launched in March 2020 to help students **strengthen their digital literacy and acquire digital skills** needed to navigate an increasingly digitalised world.
2. Under the NDLP, every secondary school student will **own a school-prescribed Personal Learning Device (PLD)**. Students may use funds from their Edusave Account to pay for the PLD.

Intended Outcomes of the PDLP

The use of the PLD for teaching and learning aims to:



**Support the Development of
Digital Literacy**



**Support Self-Directed and
Collaborative Learning**



**Enhance Teaching and
Learning**

Pasir Ris Secondary School's PLD

ENHANCED MODEL



**Intel Processor N150,
8GB RAM, 64GB Storage,
12.2" Touch Screen**

The school will be using the **Acer R857TN Chromebook** for teaching and learning.

Total cost of the bundle includes **4-year warranty and 4-year insurance** with GST: **\$588.60**

Benefits of the Chromebook:

- ✓ Economical
- ✓ Long battery life
- ✓ Lightweight (1.5 kg)
- ✓ Rugged Durability
- ✓ Convertible Laptop
- ✓ Antimicrobial Touch Screen
- ✓ Active Stylus Pen (built-in stylus)

PLD Bundle

Device Bundle includes
<div><input type="checkbox"/> Acer R857TN Chromebook</div> <div><input type="checkbox"/> Power Adaptor, Mouse, Active Stylus, and Carrying Case</div> <div><i>*Students will need an earpiece with mic to be purchased separately on their own</i></div>

Your child’s/ward’s PLD will come with the **Enhanced Device Bundle** which includes:

- **4-year warranty and 4-year insurance**

Insurance Coverage	Claimable
<div><ul style="list-style-type: none">• Fire• Lightning• Power Surges• Accidental e.g water spillage, drop etc• Theft due to forcible entry• Robbery<div><i>* Accidental loss will not be covered by insurance.</i></div></div>	<div>*2 repairs or 1 replacement (3-year insurance)</div>

Note: The price of the PLD Bundle may appear to be higher than similar models on the retail market as the price of those devices usually does not include extended warranty and insurance coverage.

**Supporting Students in the Safe
and Effective Use of the Devices**

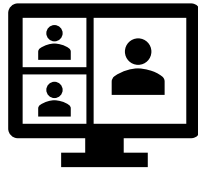
Cyber Wellness Concerns Identified by Local Studies/Surveys



**Harmful Online
Content**



**Gaming and
associated risks**



Cyberbullying



**Excessive social
media use**

** Refer to [Slide 68](#) for the references of the research papers cited in this slide.*

Supporting Students in the Safe and Effective Use of the Devices

The school has measures in place to enable a safer digital environment for learning with the use of PLDs:

- School rules on digital device use
- Classroom management and routines
- Cyber Wellness Education in CCE
- Partnering parents/guardians to support students in their use of technology for learning
- Device Management Application (DMA) to support a safer digital environment for learning

C
H
A
M
P
S

Charge PLD Fully
✓ Charge your PLD fully before coming to school

Highlight Issues
✓ Seek help from ICT Champs
✓ Inform Teachers if necessary
✓ Approach ICT Office for unresolved issues

Alert in Safeguarding PLD & Belongings
✓ Do not leave your PLD unattended
✓ Carry your PLD in a suitable laptop carrier
✓ Protect your PLD from potential hazards

Manage WiFi, Calendar & Online Lessons
✓ Check that WiFi is connected to pdlp@SSOE in school
✓ Actively learn and be self-directed
✓ Keep track of tasks in Google Calendar
✓ Complete assignments and activities promptly

Protect Passwords
✓ Remember your passwords and keep them safe
✓ Attempt self-reset of passwords first
✓ Inform your Teacher / ICT Office after 2 failed logins

Creendown Fully & Pay Attention
✓ Lower your screens and listen carefully when your Teacher is giving instructions or going through lessons

➤ When I am not in class with my PLD, have I secured it in my PDLP locker?
➤ Is my PLD ready for my next lesson?



Cyber Wellness Education in CCE



Throughout their Secondary School education, students will learn about:

- Balanced use and self control
- Cyber bullying and Upstanding
- How to be a positive influence online
- How to handle online falsehoods
- How to manage social media (peer influence, emotions, echo chambers)
- Online relationship and Online safety (grooming, self disclosure)
- To respect intellectual property rights



Parents'/Guardians' Role

- Parents/guardians play a crucial role in guiding your child/ward to use devices responsibly and safely. We would like to partner parents/guardians so that students are well supported in their use of technology for learning.
- As parents/guardians, you can help in the following ways:
 - Model good digital habits for your child/ward e.g., parents/guardians not using devices during family meals.
 - Know your child/ward well and have conversations with your child/ward about safe and responsible use of technology.
 - Discuss and come up with ground rules for internet/device usage that both your child/ward and you can agree with.
 - Encourage your child/ward to use productivity tools on his/her PLD, to organise information and simplify tasks for efficiency.

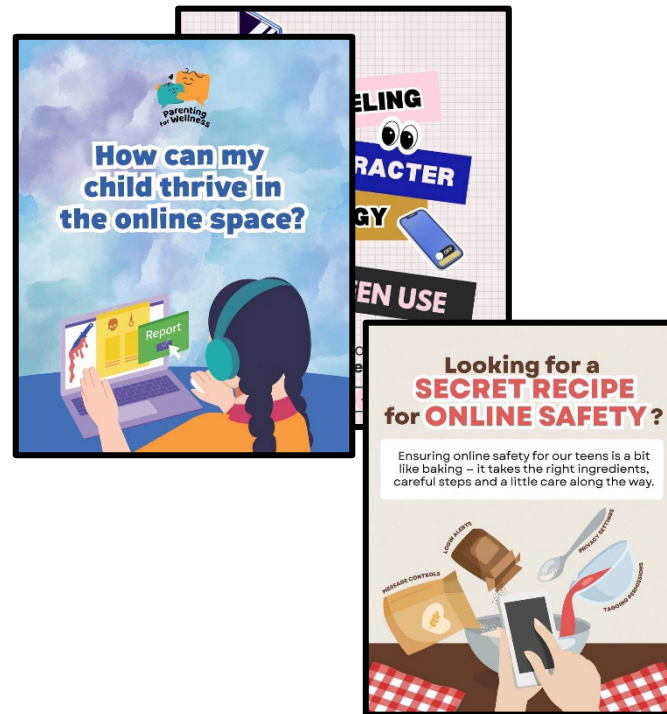
Supporting Resources

Here are some resources that you can refer to:

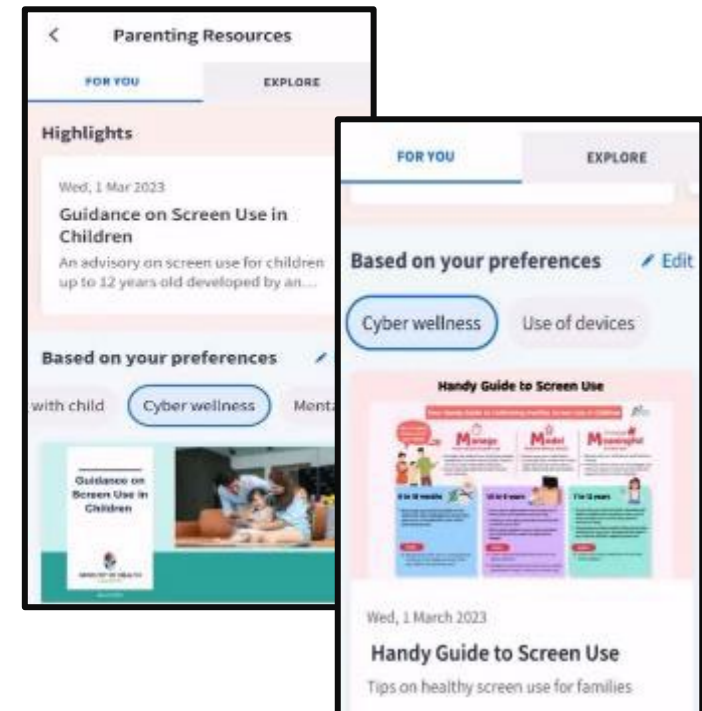
A. Parent Kit



B. Bite-sized tips and advice via Parentingwith.MOEsg Instagram page



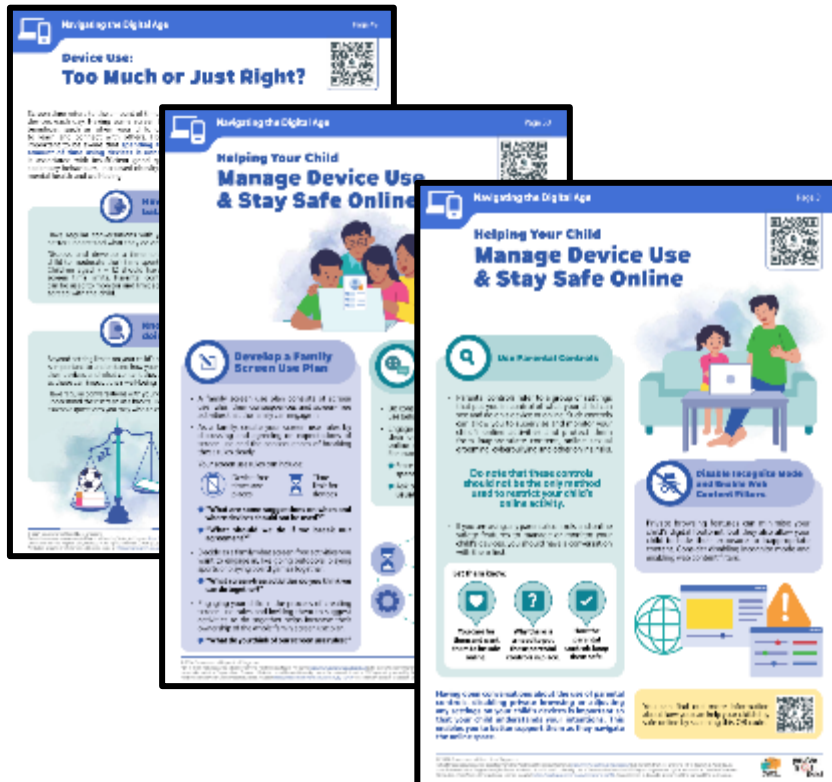
C. Resources from MOE and other agencies (available on resources repository in Parents Gateway)



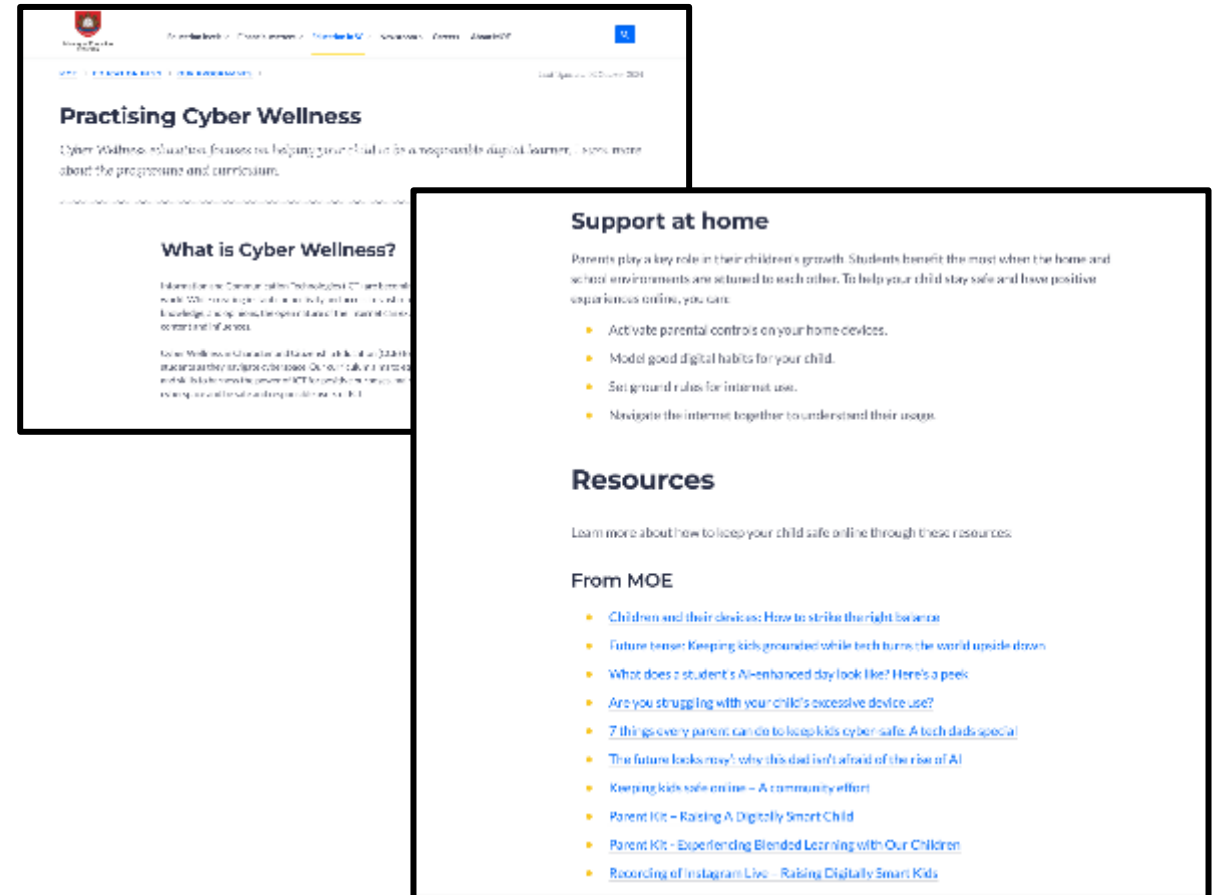
Supporting Resources

D. Parenting for Wellness Toolbox for Parents and Parenting for Wellness Website on Parent Hub

The Parenting for Wellness initiative provides bite-sized resources (practical tips and strategies) on building strong parent-child relationships, supporting your child's mental well-being and parenting in the digital age.



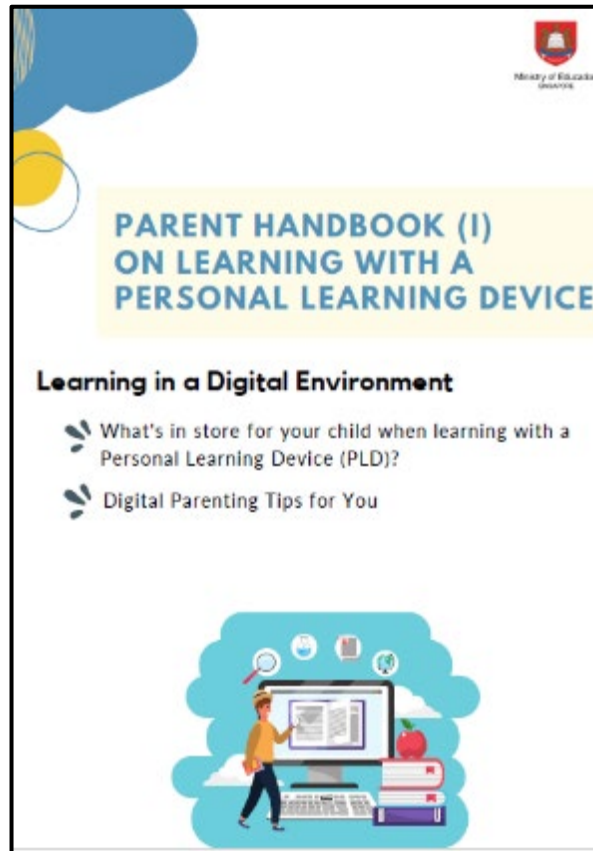
E. More resources are available via [the MOE Cyber Wellness Webpage](#)



Supporting Resources

F. Parent Handbooks (I) and (II) on Learning with a Personal Learning Device

These Handbooks provide tips on supporting your child in the use of PLDs for learning and are shared via the PG notification together with the letter to purchase PLDs.



Role of the MOE Device Management Application (DMA) in Providing a Safer Digital Environment for Learning

MOE DMA

- The MOE DMA solution for Chromebook, Lightspeed Systems®, is an app that will be installed on all students' PLDs to support their safe and responsible use of devices.
- The DMA will be funded by MOE.
- The installation of the MOE DMA applies to both devices purchased through the school and any student-owned devices that parents/guardians opt for the student to use instead of the school-prescribed PLD.
- The MOE DMA will be installed after the collection of the device. Students will be guided on the installation.
- The MOE DMA will be uninstalled from the device when students graduate or leave the school.

In-School DMA Settings (Default)

Schools will determine DMA settings for **in-school use**. As a default, these settings will continue to be in place after school as well:

- MOE and the school will set the level of web content filtering, including filtering objectionable content or content that may not be conducive to teaching and learning (e.g., online messaging, social media, pornography, gambling, or websites containing extremist content).¹
- School hours are defined to be from **6:30 am to 6 pm** and after school hours-from **6 pm to 10:30 pm**. The device will shut down at 10:30 pm by default.²
- The school will determine the applications and programs to be installed to support teaching and learning.

¹ YouTube is not blocked by default as teachers use YouTube for teaching and learning. However, YouTube videos that are categorised as harmful by YouTube Restricted and Lightspeed Smart Play are blocked.

² Schools have the flexibility to customise the following:

- start of school hours, provided they are **no earlier than 6:30am**;
- end of school hours / start of after-school hours (no restriction);
- End of after-school hours / start of device sleep hours, provided it is **no later than 10:30pm**.

After-School DMA Parent Options

1. After-School DMA Parent Options provide parents with the flexibility in managing their child's/ward's use of the PLD after school hours.
2. The following tables outline the different levels of restrictions, controls, and monitoring for each DMA option after school hours.

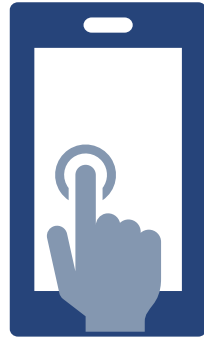
Default	Option A	Option B
Default Setting (Note: This will apply if no alternative options are chosen)	DMA settings can be modified by Parents/Guardians after school hours	DMA will be inactive after school hours¹
For parents/guardians who want their child's/ward's use of the PLD to be restricted only to teaching and learning, and prefer to leave it to the school to decide on DMA settings after school hours.	For parents/guardians who prefer to take charge of the level of restrictions for their child's/ward's use of the PLD after school hours regulated by the DMA.	For parents/guardians who do not want their child's/ward's use of the PLD after school hours to be regulated by the DMA at all.

¹ No data will be collected after school hours when the DMA is inactive.

- Having default school settings continue after school hours is the best option for parents/guardians who prefer not to, or do not feel ready to manage their child's/ward's device use on their own.
- Parents/guardians can request to change their choice of DMA settings, which is the existing practice.

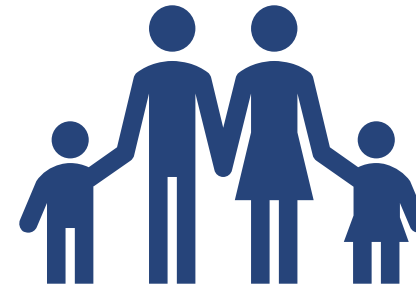
Support for Parents/Guardians

Parents/guardians may wish to consider the following questions to decide the After-School DMA Parent Option that best suits your child/ward.



A. Child's/ward's current device usage habits

- How much time does my child/ward spend on their device?
- How well is my child/ward able to regulate their device usage on their own?
- Does my child/ward get easily distracted while doing online learning?



B. Parents'/Guardians' involvement

- How confident and familiar am I with managing my child's/ward's cyber wellness?
- Are there existing routines and open conversations on the use of the Internet at home?
- Am I aware of how to prevent different types of cyber threats that my child/ward might face?

Data Collected by the MOE DMA

1. The MOE DMA does **NOT** collect any of the following data:
 - Login IDs and passwords entered into websites or into any applications
 - Actions performed (e.g., posts, online comments, items added to a shopping cart, etc.) when visiting websites and using apps
 - Documents and photos stored in the PLDs
 - PLD location
 - Webcam videos and microphone recordings
2. Parents may update their personal data (e.g., email addresses, names) by contacting the school, in accordance with the Personal Data and Protection Act (PDPA).

What's Next?

PLD Procurement



Time Frame	Activity
22 December 2025 – 5 January 2026	<ol style="list-style-type: none"> 1. Submit: <ol style="list-style-type: none"> a. consent to PLD purchase via in the PG notification which includes the following: <ul style="list-style-type: none"> • Intent to Purchase Personal Learning Device (PLD); • Authorisation Form for the Collection of PLD b. [For Singapore Citizen students only] the Standing Order (SO) for the use of Edusave Account via https://go.gov.sg/edusaveformsgso if you have not done so previously. <p><i>Parents without access to PG can submit their consent via hardcopy obtained from School General Office.</i></p>
Upon receiving School Bill	Parent/Guardian to make payment via Giro/PayNow (where necessary if <u>not</u> using Edusave)
Before end-Term 1 (TBC)	<ul style="list-style-type: none"> • Collection of devices by students • Parents to indicate choice of after-school DMA settings

Collection of Devices

Your child/ward will be collecting his/her device in school **before the end of Term 1**. The exact date will be communicated once confirmed.

If you would like to personally/have another adult to verify the condition of the device during collection with your child/ward:

- You may collect the device personally or appoint an adult proxy to do so **at the vendor's service/collection centre***
- Your child/ward would need to bring the device to school and arrange for the school's IT department to install the DMA.

Please approach the school for further advice or clarification if you would like to make this arrangement.

*Parents/Guardians (or adult proxy) will not be able to collect the PLD from the school.

Blended Learning (BL) Day

- ❑ **Fortnightly BL Days** begin on **odd week Fridays** from **23 January 2026**.
- ❑ Most of the assignments for the first few BL Days would be offline work.

Pre-BL Day	<ul style="list-style-type: none"> ❑ Students without a conducive environment for learning may inform HTs of their intent to return to school for BL Day. The School Library will be open and light snacks will be provided. ❑ Students who did not complete previous BL Day assignments repeatedly will be invited back to school.
During BL Day	<ul style="list-style-type: none"> ❑ Students to check BL Day instructions which will be uploaded in Google Classroom by 7am. ❑ Inform HTs and subject teacher if unable to attend scheduled synchronous lesson (8 – 9 am). ❑ Contact subject teachers (<i>refer to instructions from teachers</i>) in case any questions arises. ❑ Typical deadline to complete BL Day assignment: By Sunday before 10.30 pm
Post-BL Day	<ul style="list-style-type: none"> ❑ Students who did not complete BL Day assignments will be made to stay back to complete after school. ❑ Parents will be informed. ❑ Students who fail to complete BL Day assignments repeatedly will be invited back to school for subsequent BL Days.